



COMPOSITION



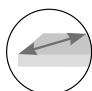
Hydrophobic wood particle base board, E1 classified, coated with High Pressure Laminate (HPL) on the upper side and Kraft paperboard on the lower side.

RECOMMENDED APPLICATIONS

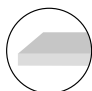
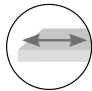
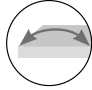
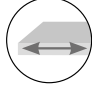



Components for furniture and decoration.

BASE BOARD CHARACTERISTICS

Dimensional Tolerances











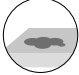

Property	Valeur	Standard
 Length and Width	± 5 mm.	EN 324-1
 Thickness	± 0,3 mm	EN 324-1
 Squareness	2 mm	EN 324-2

Physical & Mechanical Properties

Property	Thickness (mm)		Standard
	25-32	33-40	
 Density (kg/m ³)	600±30	630 ±30	EN 323
 Tensile strength (N/mm ²) – min.	0,35	0,30	EN 319
 Flexural strength (N/mm ²) – min.	11	9	EN 310
 Elastic modulus (N/mm ²) – min.	1700	1550	EN 310
 Residual humidity (%) – range	5 - 13		EN 322
 Formaldehyde content E1 (mg/100g) – max.	8 mg.		EN 120
 Fire performance (class)	D-s2, d0		EN 13501-1

 COATING CHARACTERISTICS

Physical & Mechanical Properties

Property	R3 SUPRA	Standard
 Resistance to cold food products	Conforming	UNE 56875
 Resistance to hot food	Conforming	UNE 56875
 Resistance to cleaning products	Conforming	UNE 56875
 Dry Heat Resistance 180 °C	Grade 5 / 5	UNE 56875
 Resistance to water steam	Grade 4 / 5	UNE 56875
 Abrasion resistance	HPL Class 3B / 500/650 DPL / CPL Class 3A / 200/400	UNE 56875
 Resistance to impact stress (large diameter stel ball)	HPL 180 cm. DPL / CPL 140 cm.	UNE 56875
 Coating adhesion (% particulate adhesion) 100%	100%	UNE 56875
 Light fastness	Conforming	UNE 56875
 Scratch resistance	Grade 5	UNE 56875
 Stain resistance	Conforming	UNE 56875
 Edge banding (finished parts)	Conforming	UNE 56875

Evaluation of surface defects

To be visible under the above conditions not be considered admissible defects (bigger than 1 mm²) as follows:

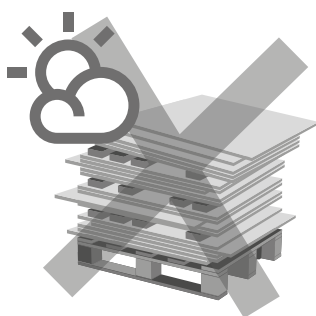
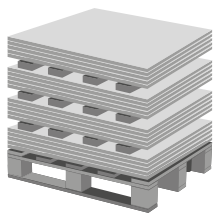
1. Viewing distance: 70 cm.
2. Position of workpiece: vertical (installation conditions).
3. Lighting: diffused light of white fluorescent lamps.
4. Observation time: maximum 20 seconds.

Quality standard

The supplying conditions for the panels are:

1. 70% flawless panels / 30% panels with maximum 3 defects.
2. For a more convenient use, these defects are marked.
3. Any defect in the perimeter of the board, up to one centimeter inward, will not be considered as such because it is in an area that needs to be discarded when processing.

 USE RECOMMENDATIONS



Storage

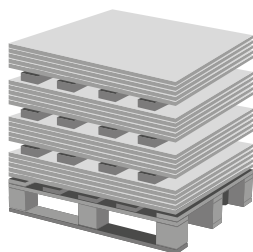
The bands should be checked upon receipt so that any eventual issue can be communicated as soon as possible.

Avoid exposure of the product to sunlight (UV radiation) and other sources of heat. Store in a ventilated area. Use a FIFO inventory management system to avoid the mixing of products of very different dates of production, which, with the slight changes in the qualities of coatings, might lead to visible differences between them.

The recommended range of environmental conditions of storage and use is as follows:

Temperature: 10°C - 40°C

Humidity: 30% - 70%



Horizontal Storage

The bands must not be placed directly on the ground. Whenever possible, the storage support media supplied with each pack should be used and placed in the same position in order to maintain a uniform and level height and to prevent deformation of the bands. For the length of 2750 mm at least 4 supports should be used distributed uniformly.

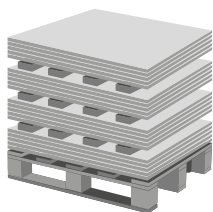
When stacking multiple packs, up to a recommended maximum of four, the supports of different packs must be aligned vertically in order to transfer the weight to the lower layers without deforming the bands. To protect the surface of the boards, use upper and lower board protections.



Handling & Transport

During machining of the bands, appropriate suction systems must be used and, if necessary, protective masks to prevent breathing in of dust generated from the bands. The boards must not be dragged on any surface that may cause deterioration of any of their faces.

The bands should not be dragged on any surface that may cause deterioration of any of their faces.

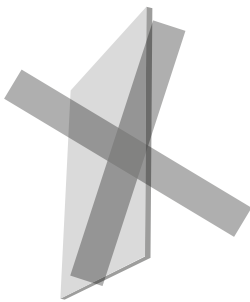


USE RECOMMENDATIONS



Cleaning

For cleaning, it is recommended to use a nonabrasive cloth moistened with soap and water and immediate subsequent drying. Under no circumstances must harsh chemicals be used such as solvents, alcohol, ammonia, etc.



Applications

The characteristics of the product enable it to be used as a working plane.

The information contained in this document does not release the purchaser, processor, assembler and/or user from his obligation to check the compatibility of the material with his intended use and assembly.



Updates

This document may be modified at any time by the company without any express obligation to send any updated edition to all original recipients. To verify that you have the latest edition available, you are advised to contact the customer service department of Alvic Group.